



## Instal·lació Weblogic 12.2.1.3

Taula de continguts

- 1. Introducció
- 2. Necessitat
- 3. Prerequisits
- 4. Instal·lació de Weblogic
  - 4.1. Entorn diba\_mars
  - 4.2. Instal·lació personalitzada

### 1. Introducció

El següent article explica com instal·lar la versió 12.2.1.3 del producte Oracle Weblogic Server en local i com configurar el nou servidor al framework proporcionat amb el FAM 4, Eclipse Mars.

### 2. Necessitat

Els servidors Weblogic dels entorns DVOL, INT, PRE i PRD es van actualitzar a la versió 12.2.1.3 i la versió del servidor instal·lada localment és la 12.1.3.0

### 3. Prerequisits

- Instal·lació del framework diba\_mars a la unitat c:
- En cas contrari, qualsevol IDE amb plugin per connectar-se al Weblogic

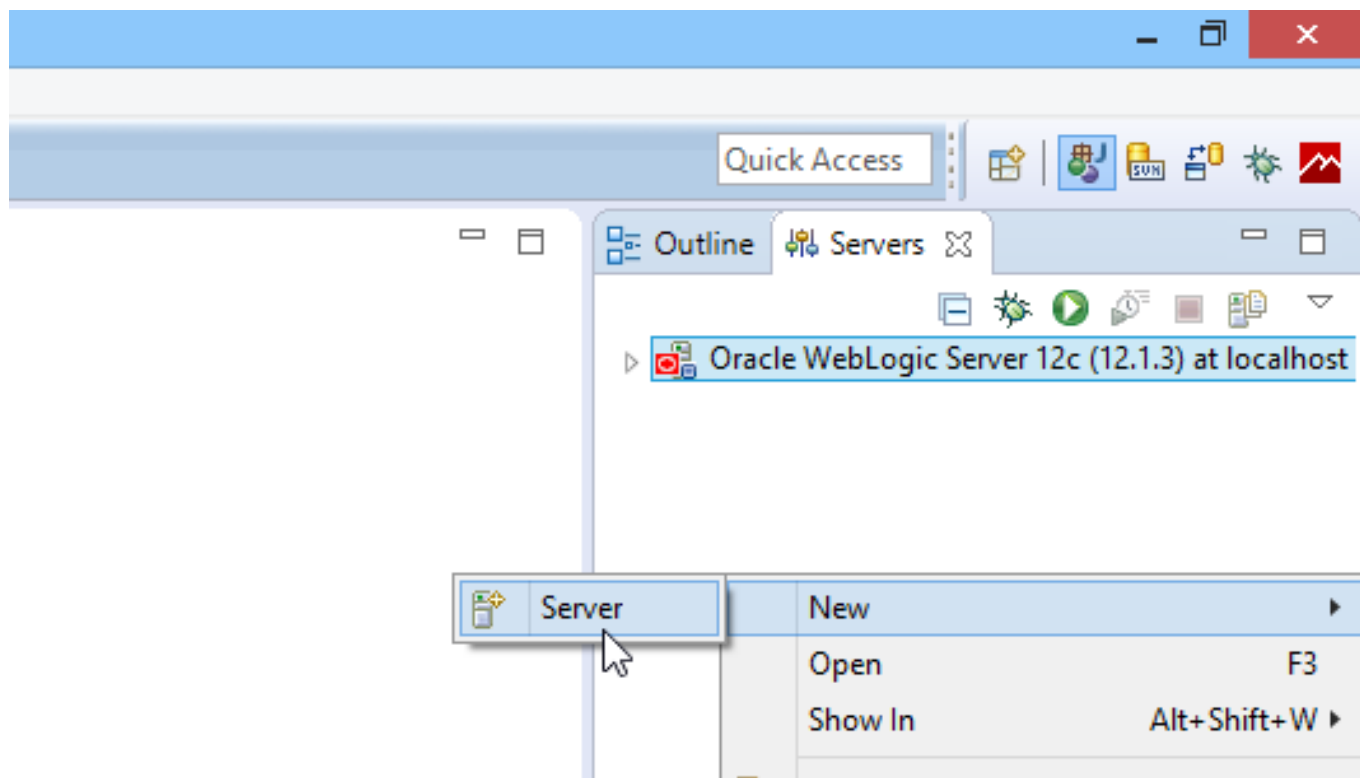
### 4. Instal·lació de Weblogic

#### 4.1. Entorn diba\_mars

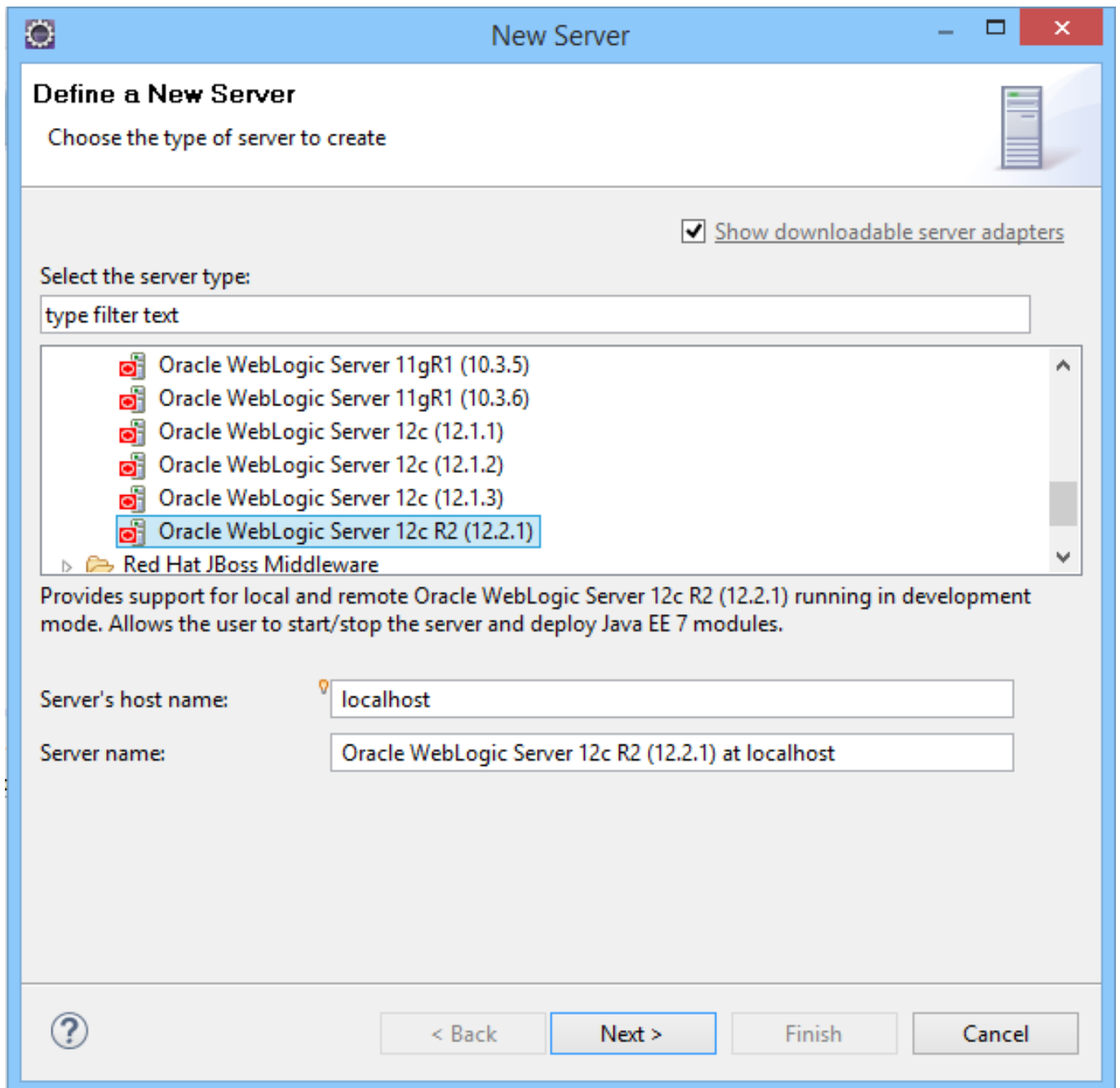
Decarregar l'arxiu [zip](#) [1] amb el servidor Weblogic configurat i descomprimir a C:\diba\_mars\servers.

A continuació, obrir l'Eclipse Mars i configurar un nou servidor Weblogic.

Finestra de servidors, botó dret.



Selecciona la versió del servidor Weblogic



Indicar el directori home de la instalació: C:\diba\_mars\servers\wls12213\wlserver



**New Server**

**Oracle WebLogic Server 12c R2 (12.2.1)**  
Define a WebLogic Runtime

**Name:** Oracle WebLogic Server 12c R2 (12.2.1)

**WebLogic home:** C:\diba\_mars\servers\wls12213\wlserver

**Java home:** c:\diba\_mars\jdk\jdk1.8.0\_40

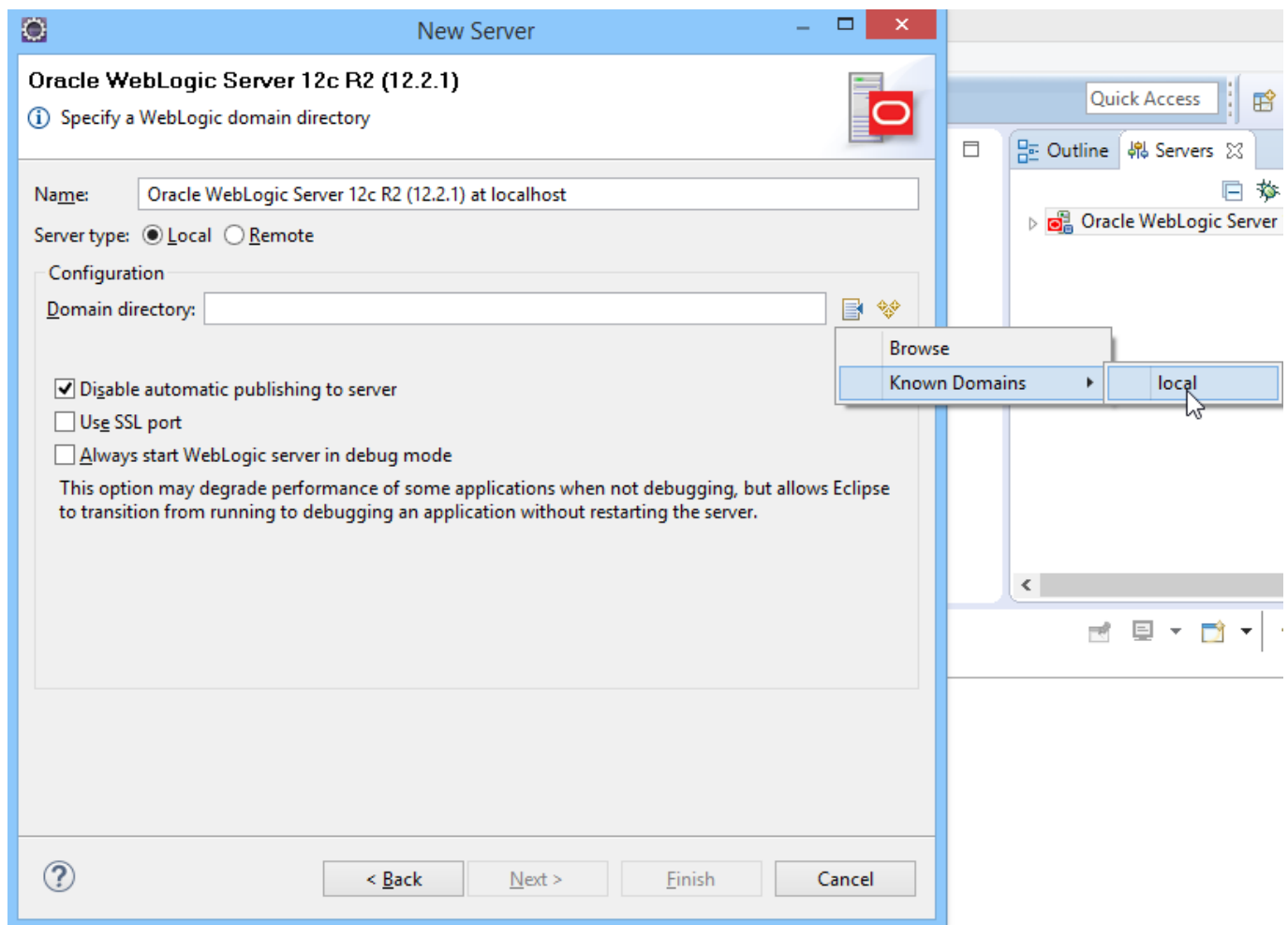
**Patch profile:**

**Server Extensions**

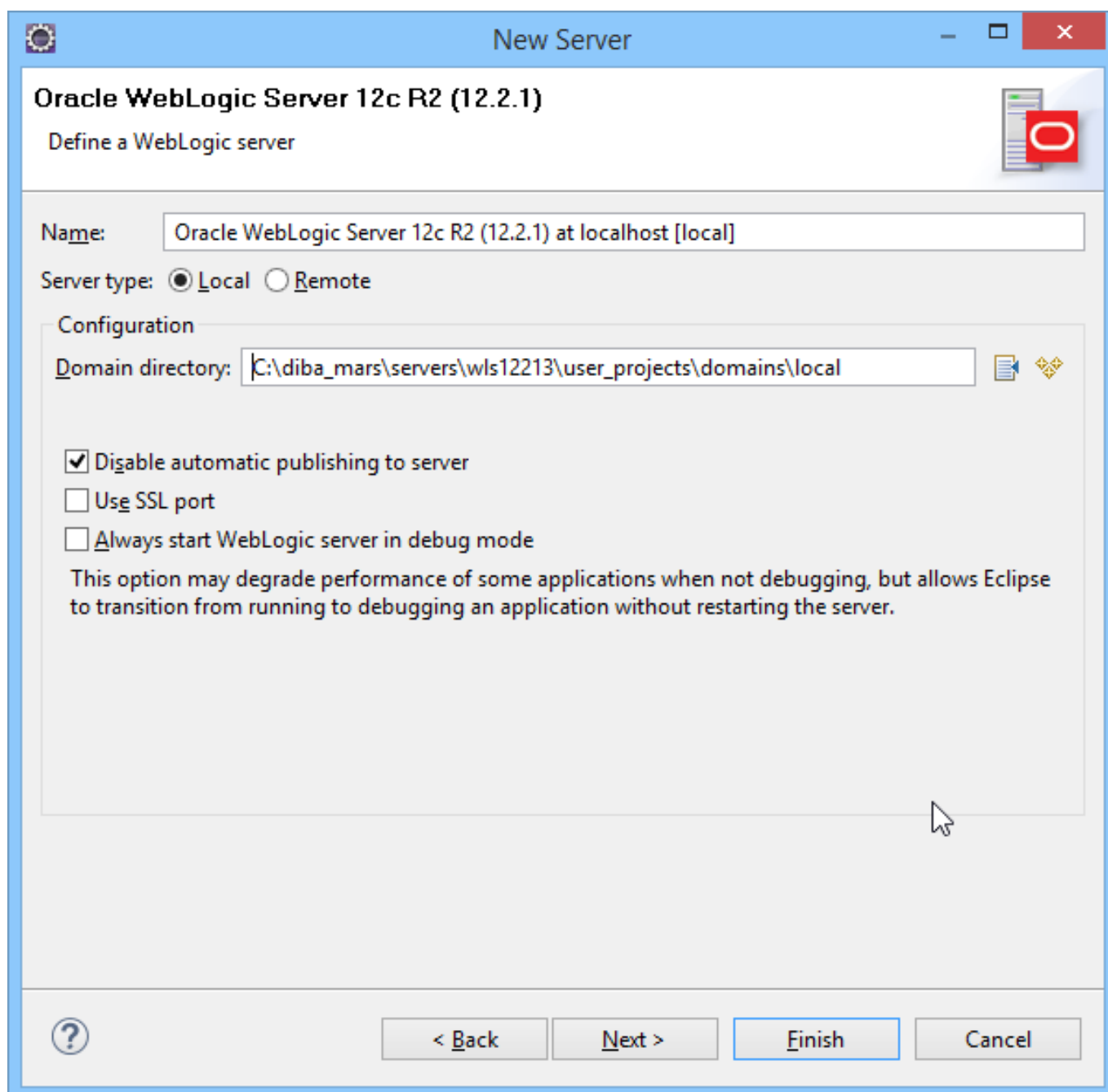
- ✓ Java Persistence 2.1

? < Back Next > Finish Cancel

Seleccionar el domini:



I finalitzar:

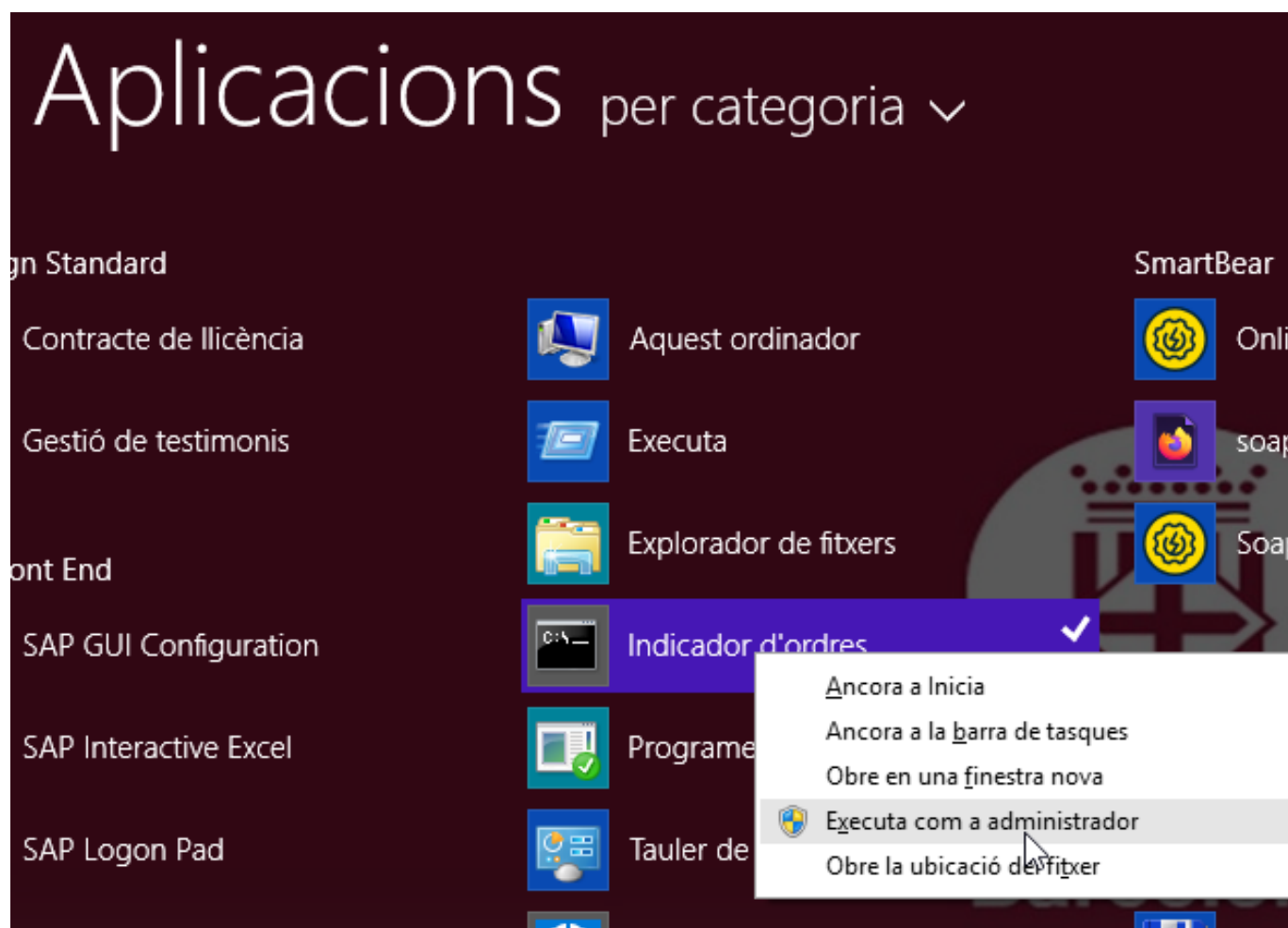


## 4.2. Instal·lació personalitzada

En aquest cas, descarrega el [zip de la instal·lació genèrica](#) [2] i segueix els següents passos, adaptant els directoris a les teves necessitats. Els passos següents estan fets amb els següents valors:

- Fitxer a la carpeta: D:\UserData\gimenezbf\Downloads\tools
- Arxiu: fmw\_12.2.1.3.0\_wls.jar
- JDK 1.8 de diba\_mars, es pot substituir per qualsevol JDK 1.8

Obrir una finestra com administrador



Executar les següents instruccions:

```
cd D:\UserData\gimenezbf\Downloads\tools
```

```
cd d:
```

```
c:\diba_mars\jdk\jdk1.8.0_40\bin\java.exe -jar fmw_12.2.1.3.0_wls.jar
```



Oracle Fusion Middleware 12c WebLogic Server and Coherence Installation - Step 1 of 8

**Welcome**

**ORACLE**  
FUSION MIDDLEWARE

- Welcome
- Auto Updates
- Installation Location
- Installation Type
- Prerequisite Checks
- Installation Summary
- Installation Progress
- Installation Complete

Welcome to the Oracle Fusion Middleware 12c (12.2.1.3.0) WebLogic Server and Coherence Installer.

Use this installer to create a new Oracle home that contains the Oracle WebLogic Server and Oracle Coherence software. You can use this software to configure a WebLogic Server domain for the deployment of Java applications.

For more information, see [Install, Patch, and Upgrade](#) in the Oracle Fusion Middleware documentation library.

Context-sensitive online help is available from the [Help](#) button.

Copyright © 1996, 2017, Oracle and/or its affiliates. All rights reserved.

Help < Back Next > Finish Cancel





Oracle Fusion Middleware 12c WebLogic Server and Coherence Installation - Step 2 of 8

**Auto Updates**

ORACLE  
FUSION MIDDLEWARE

- Welcome
- Auto Updates**
- Installation Location
- Installation Type
- Prerequisite Checks
- Installation Summary
- Installation Progress
- Installation Complete

Skip Auto Updates

Select patches from directory

Location:

Search My Oracle Support for Updates

Username:

Password:

Directorio d'instal·lació: C:\diba\_mars\servers\wls12213



Oracle Fusion Middleware 12c WebLogic Server and Coherence Installation - Step 3 of 8

### Installation Location

**ORACLE**  
FUSION MIDDLEWARE

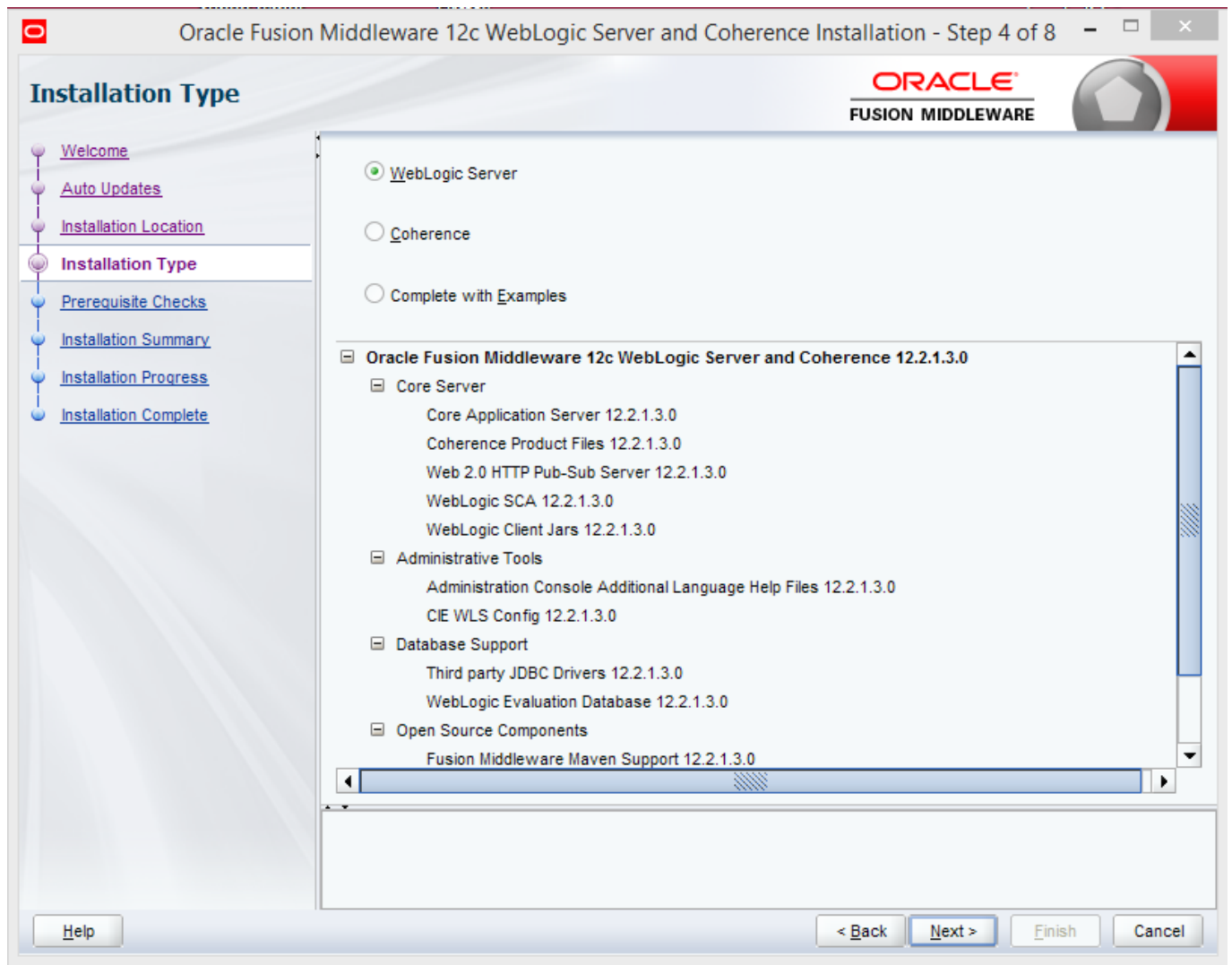
- Welcome
- Auto Updates
- Installation Location**
- Installation Type
- Prerequisite Checks
- Installation Summary
- Installation Progress
- Installation Complete

Oracle Home:  
C:\diba\_mars\servers\wls12213

Feature Sets Installed At Selected Oracle Home:

The Oracle Home C:\diba\_mars\servers\wls12213 will be used for all Oracle Feature Sets in this installation.

This page only shows Feature Sets installed at the selected Oracle Home.  
It does not show Feature Sets installed anywhere else.



Potser no troba un JDK, però es configurarà amb el de la finestra



Oracle Fusion Middleware 12c WebLogic Server and Coherence Installation - Step 5 of 8

### Prerequisite Checks

ORACLE  
FUSION MIDDLEWARE

- Welcome
- Auto Updates
- Installation Location
- Installation Type
- Prerequisite Checks**
- Installation Summary
- Installation Progress
- Installation Complete

100%

✓	Checking operating system certification
⚠	Checking Java version used to launch the installer

Stop Rerun Skip  View Successful Tasks View Log

⊕ ✓ Checking operating system certification  
⊕ ⚠ Checking Java version used to launch the installer

Help < Back Next > Finish Cancel



Oracle Fusion Middleware 12c WebLogic Server and Coherence Installation - Step 6 of 8

### Installation Summary

**ORACLE**  
FUSION MIDDLEWARE

- Welcome
- Auto Updates
- Installation Location
- Installation Type
- Prerequisite Checks
- Installation Summary**
- Installation Progress
- Installation Complete

**Install Oracle Fusion Middleware 12c WebLogic Server and Coherence**

- Installation Location**
  - Oracle Home Location: C:\diba\_mars\servers\wls12213
  - Log File Location: D:\UserData\gimenezbf\AppData\Local\Temp\Orainstall2020-03-31\_02-48-08PM\install2020-03-31\_02-48-08PM.log
- Disk Space**
  - Required: 873 MB
  - Available: 172892 MB
- Feature Sets to Install**
  - Fusion Middleware Maven Support 12.2.1.3.0
  - Core Application Server 12.2.1.3.0
  - Coherence Product Files 12.2.1.3.0
  - Web 2.0 HTTP Pub-Sub Server 12.2.1.3.0
  - WebLogic SCA 12.2.1.3.0
  - WebLogic Client Jars 12.2.1.3.0
  - FMW Platform Generic 12.2.1.3.0
  - OPatch 13.9.2.0.0
  - Third party JDBC Drivers 12.2.1.3.0
  - WebLogic Evaluation Database 12.2.1.3.0
  - Administration Console Additional Language Help Files 12.2.1.3.0
  - CIE WLS Config 12.2.1.3.0

Select Install to accept the above options and start the installation.

To change the above options before starting the installation, select the option to change in the left pane or use the Back button.



Oracle Fusion Middleware 12c WebLogic Server and Coherence Installation - Step 7 of 8

### Installation Progress

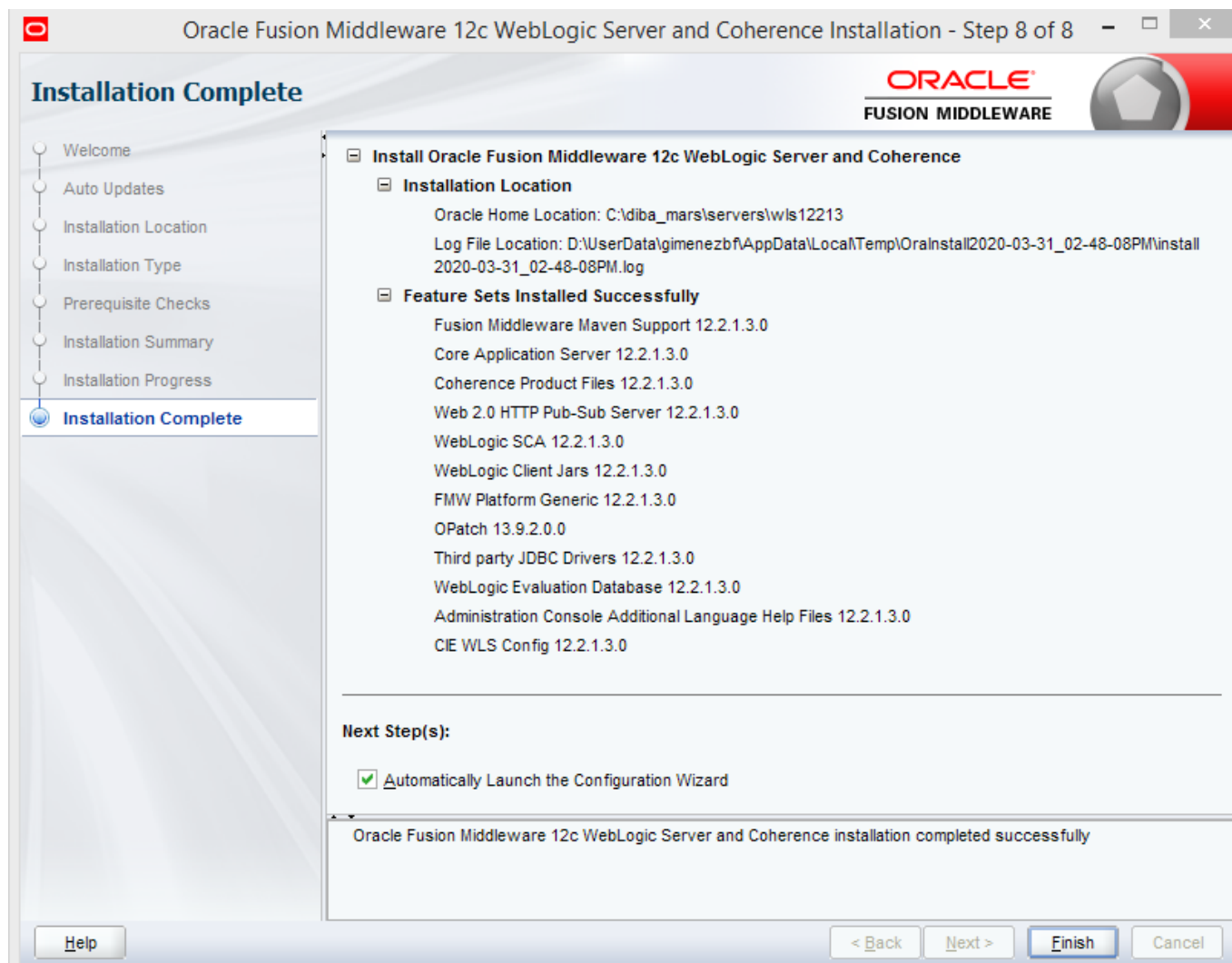
ORACLE  
FUSION MIDDLEWARE

- Welcome
- Auto Updates
- Installation Location
- Installation Type
- Prerequisite Checks
- Installation Summary
- Installation Progress**
- Installation Complete

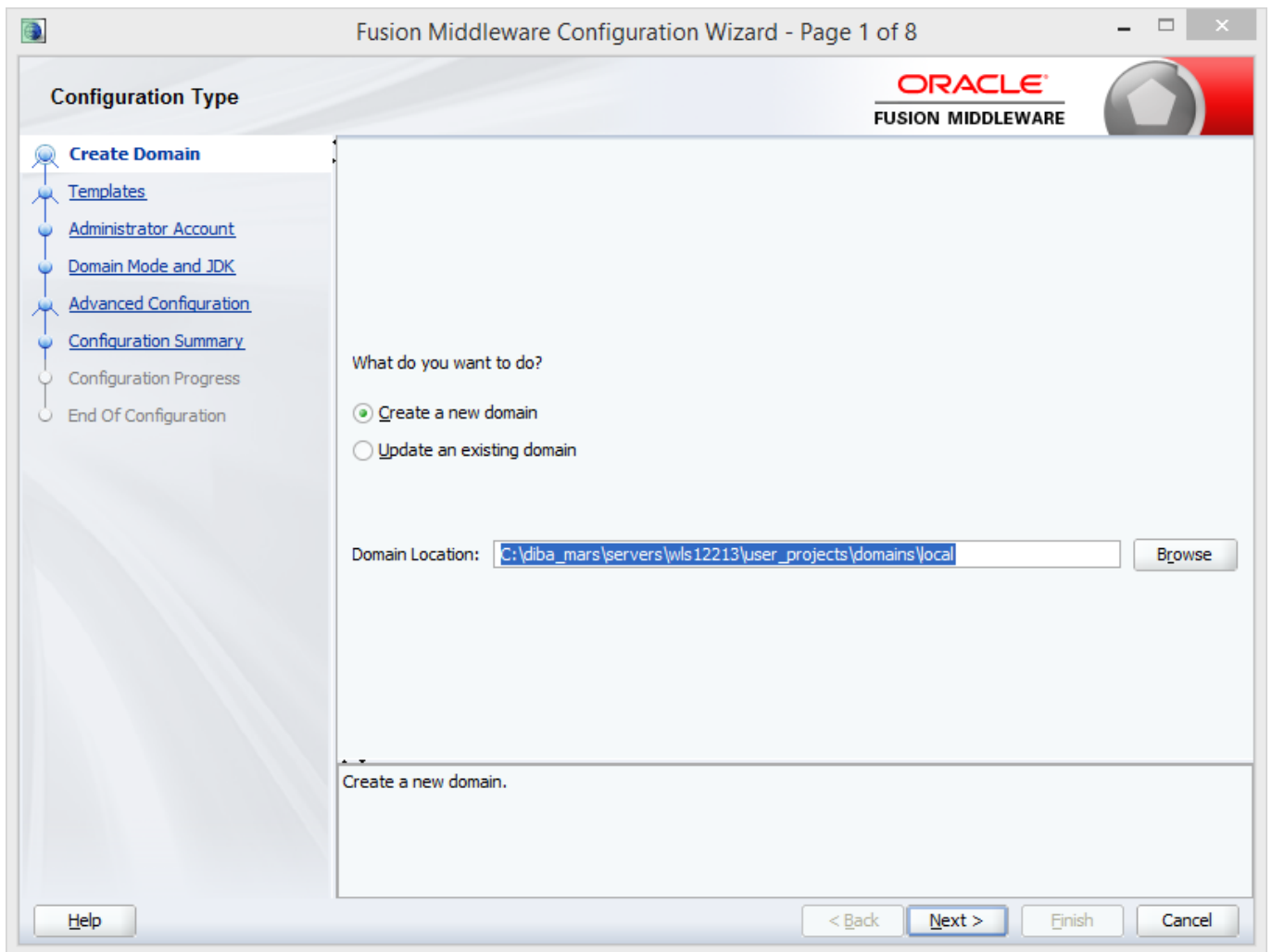
0%

✓	Prepare
⌚	Copy
	Generating Libraries
	Performing String Substitutions
	Linking
	Setup
	Saving the inventory
	Post install scripts

**Hardware and Software  
Engineered to Work Together**

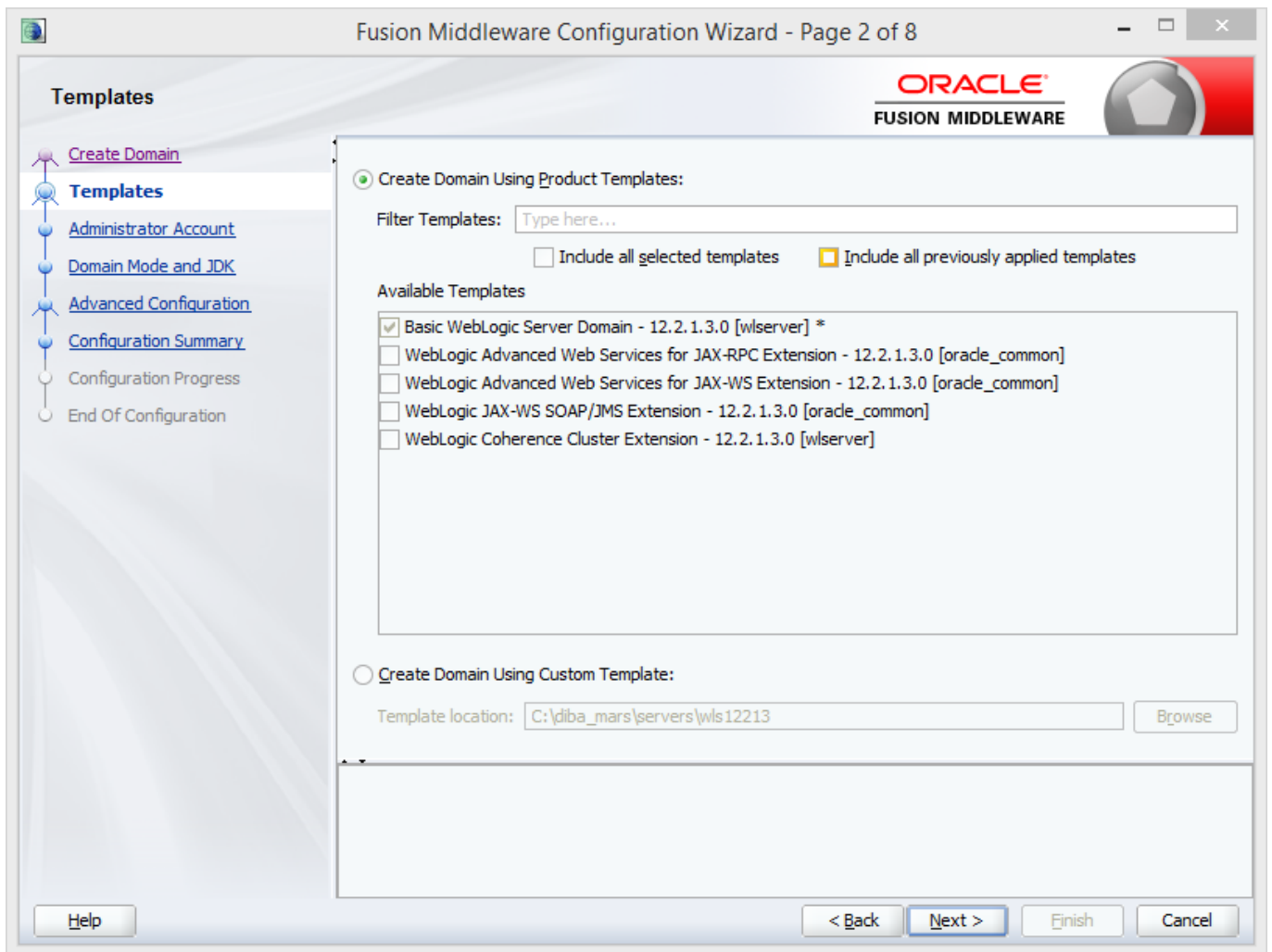


I ara la configuració del domini de Weblogic, canviem el nom del domini per defecte a 'local', com l'actual configuració del Weblogic 12.1.3 C:\diba\_mars\servers\wls12213\user\_projects\domains\local



Plantilla per defecte





Clau de l'administrador: welcome1



Fusion Middleware Configuration Wizard - Page 3 of 8

**Administrator Account**

ORACLE  
FUSION MIDDLEWARE

- Create Domain
- Templates
- Administrator Account**
- Domain Mode and JDK
- Advanced Configuration
- Configuration Summary
- Configuration Progress
- End Of Configuration

Name:

Password:

Confirm Password:

Must be the same as the password. Password must contain at least 8 alphanumeric characters with at least one number or special character.

Help < Back Next > Finish Cancel

Directori del JDK per defecte



Fusion Middleware Configuration Wizard - Page 4 of 8

**ORACLE**  
FUSION MIDDLEWARE

### Domain Mode and JDK

- Create Domain
- Templates
- Administrator Account
- Domain Mode and JDK**
- Advanced Configuration
- Configuration Summary
- Configuration Progress
- End Of Configuration

**Domain Mode**

Development  
Utilize boot.properties for username and password, and poll for applications to deploy.

Production  
Require the entry of a username and password, and do not poll for applications to deploy.

**JDK**

Oracle HotSpot 1.8.0\_40 c:\DIBA\_M~2\jdk\jdk18~1.0\_4

Other JDK Location:



Fusion Middleware Configuration Wizard - Page 5 of 8

**Advanced Configuration**

**ORACLE**  
FUSION MIDDLEWARE

- Create Domain
- Templates
- Administrator Account
- Domain Mode and JDK
- Advanced Configuration**
- Configuration Summary
- Configuration Progress
- End Of Configuration

**Administration Server**  
Modify Settings

**Node Manager**  
Configure Node Manager

**Topology**  
Add, Delete or Modify Settings for Managed Servers, Clusters, Virtual Targets and Coherence

Help < Back Next > Finish Cancel



Fusion Middleware Configuration Wizard - Page 6 of 8

**Configuration Summary**

[Create Domain](#)  
[Templates](#)  
[Administrator Account](#)  
[Domain Mode and JDK](#)  
[Advanced Configuration](#)  
**Configuration Summary**  
 Configuration Progress  
 End Of Configuration

View: Deployment

- local (C:\diba\_mars\servers\wls12213\user\_projects\domo
  - AdminServer
    - AdminServer

Name	Basic WebLogic Server Domain
Description	Create a basic WebLogic Server domain w
Author	Oracle Corporation
Location	C:\diba_mars\servers\wls12213\wlserv

Select **Create** to accept the above options and start creating and configuring a new domain. To change the above configuration before starting Domain Creation, go back to the relevant page by selecting its name in the left pane, or by using the **Back** button.



Fusion Middleware Configuration Wizard - Page 7 of 8

**ORACLE**  
FUSION MIDDLEWARE

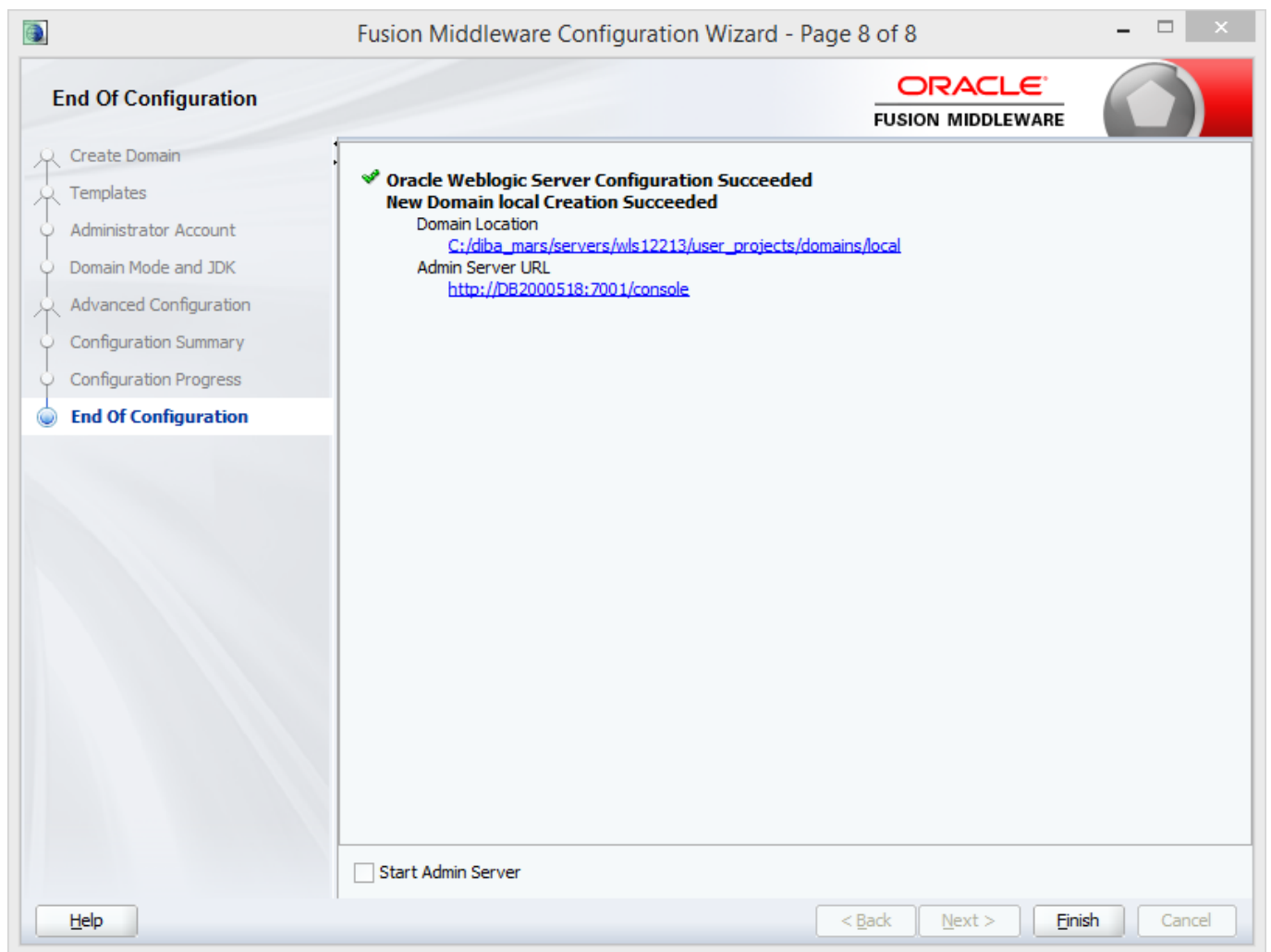
### Configuration Progress

- Create Domain
- Templates
- Administrator Account
- Domain Mode and JDK
- Advanced Configuration
- Configuration Summary
- Configuration Progress**
- End Of Configuration

100%

✓	Copy Unprocessed Artifacts
✓	Security Processing
✓	Artifacts Generation
✓	String Substitution
✓	Post Processing

Help < Back Next > Finish Cancel



Finalment, instal·lar les llibreries de suport (p. ex. *JAX-RS*, que necessiten moltes de les aplicacions **FAM4**) segons [Oracle](#) [3].

**URL d'origen:** <https://comunitatdstsc.diba.cat/wiki/instal-lacio-weblogic-12213>

**Enllaços:**

[1] [https://drive.google.com/open?id=1\\_Fmlfxl05nii2KHZuTtYaP7tPY021wcW](https://drive.google.com/open?id=1_Fmlfxl05nii2KHZuTtYaP7tPY021wcW)

[2] <https://drive.google.com/open?id=1zvdH2569pSD3Gc0zKw-vM7b-FHjPMafB>

[3] <https://docs.oracle.com/middleware/1213/wls/RESTF/use-jersey20-ri.htm#RESTF297>